



**Swimming**

with the big fish

**SME MATCHMAKER SERVICE**

Helping high-performing SMEs to secure high value,  
long-term framework contracts on major projects



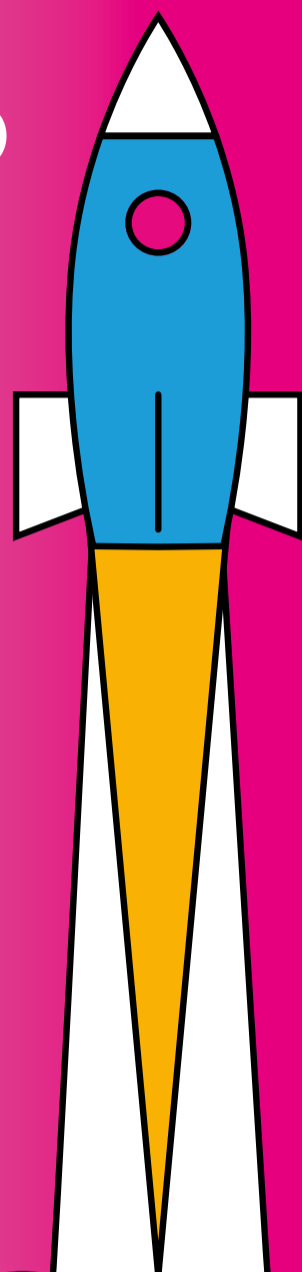
**QUARTERLY CONNECT**

# HERE'S YOUR EXCLUSIVE INVITE TO QUARTERLY CONNECT 6

**We know you're all keen to network with each other. Quarterly Connect 6 will provide you with the platform to do this – and more!**

**We'll open the doors of our Papcastle Depot for a whole day so Matchmaker SMEs, along with representatives from Programme and Project Partners and appointed Key Delivery Partners can network, share knowledge and explore opportunities to collaborate in a relaxed setting.**

**In addition to networking, we will also have Knowledge Share sessions with speakers covering topics that are important to you, whether that's related to commercial and contractual issues, social value or what you are doing to overcome your day-to-day challenges. All will be revealed on the day.**



Refreshments will be served throughout to keep you energised and a buffet lunch will be available. We look forward to welcoming you.



Please let us know you're coming by getting in touch with Hazel Duhy at [hazel.duhy@solomonseurope.co.uk](mailto:hazel.duhy@solomonseurope.co.uk)



**Wednesday, 19th June, 2024**

**Doors open from 10.00am to 3.00pm** (buffet lunch included)



**Solomons Europe, Papcastle Depot, Papcastle Road  
Great Broughton, Cockermouth CA13 0LD**

[///nuance.inclines.faster](http://nuance.inclines.faster)