



**Swimming**

with the big fish

**SME MATCHMAKER SERVICE**

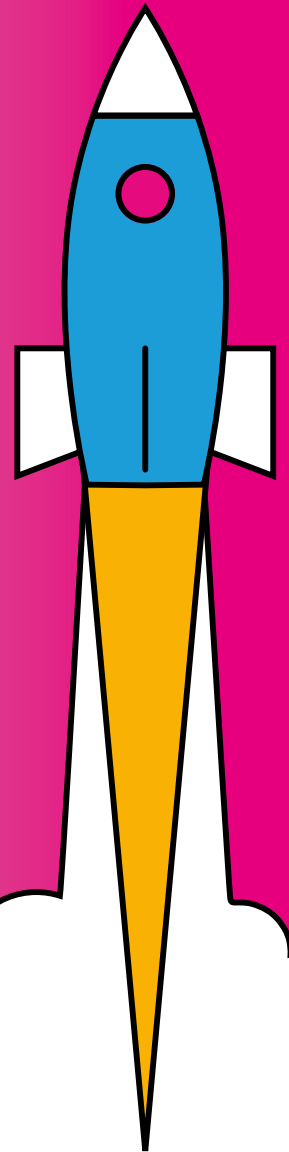
Helping high-performing SMEs to secure high value,  
long-term framework contracts on major projects



# HERE'S YOUR EXCLUSIVE INVITE TO QUARTERLY CONNECT 7

**We're excited to invite you to  
Quarterly Connect 7 at our  
Papcastle Depot.**

**Join Matchmaker SMEs, Programme  
and Project Partners, and Key  
Delivery Partners for networking,  
knowledge sharing and  
collaboration opportunities.**



Refreshments will be served throughout to keep you energised and a buffet lunch will be available. We look forward to welcoming you.



Please let us know you're coming by getting in touch with Hazel Duhy at [hazel.duhy@solomonseurope.co.uk](mailto:hazel.duhy@solomonseurope.co.uk)



**Tuesday, 15th October, 2024**

**Doors open from 10.00am to 3.00pm** (buffet lunch included)



**Solomons Europe, Papcastle Depot, Papcastle Road  
Great Broughton, Cockermouth CA13 0LD**

[///nuance.inclines.faster](http://nuance.inclines.faster)